



Pass-Thru Flash & License a Controller

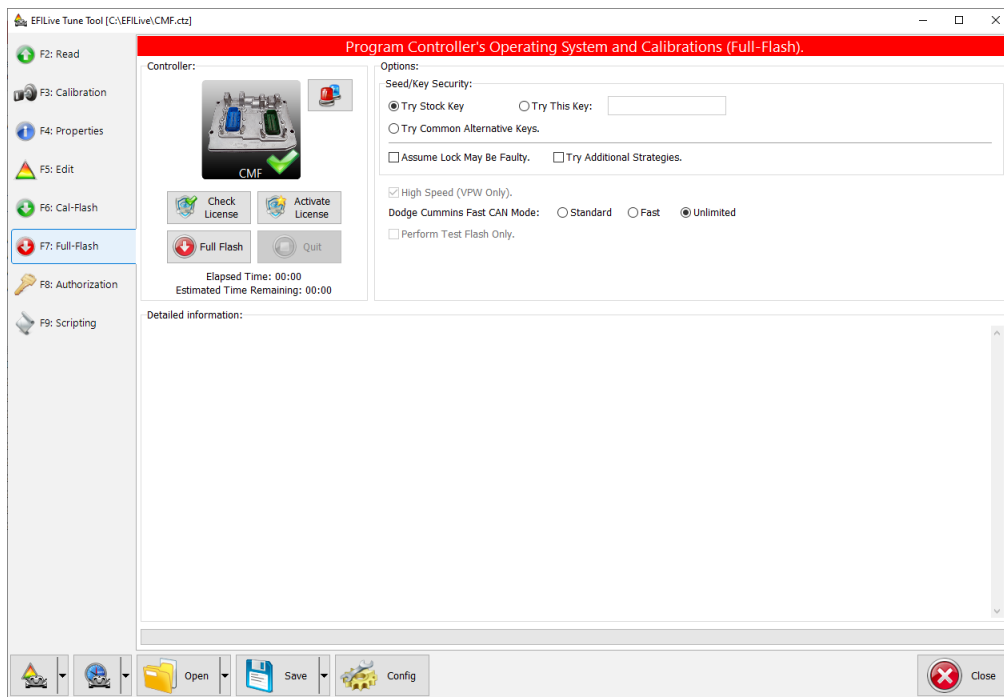
EFILive Support - 2021-09-06 - Comments (0) - V8 Scan and Tune Software

Follow these steps to license and flash the selected controller.

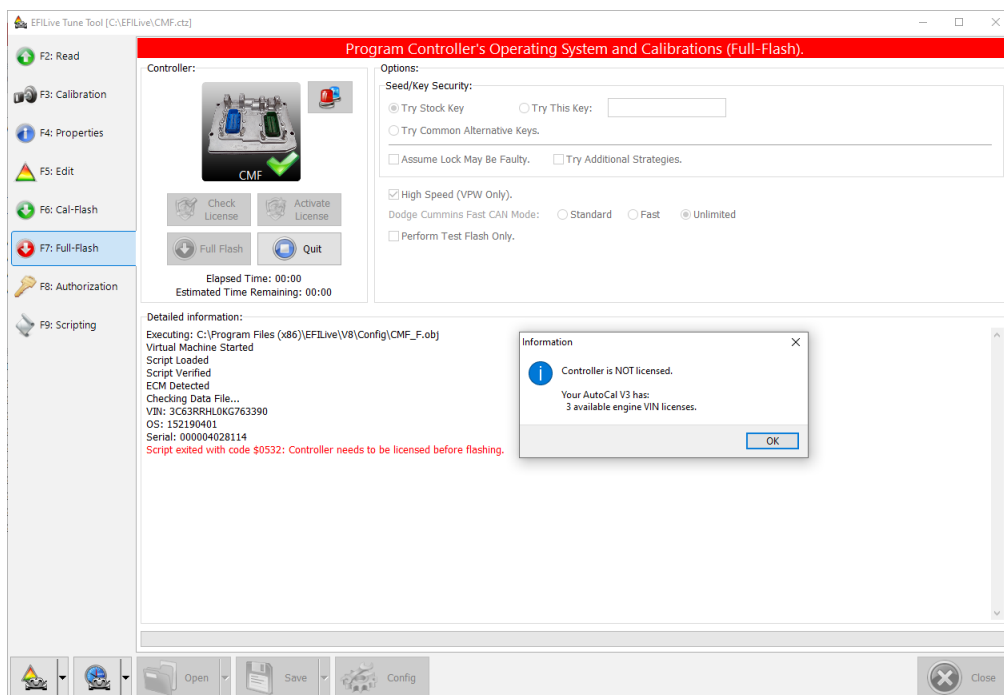
1. Open the **EFILive Scan and Tune** application.
2. Connect your **FlashScan/AutoCal** to your PC and your vehicle.
3. Turn the vehicle ignition to the **On** position (not the **Accessory** position. Vehicle must not be cranked/running when flashing).
4. Select the **[F3: Tune]** option in the left-hand pane.
5. Click on the **Open** button at the bottom left of the screen.
6. Select the calibration file for the controller you wish to flash or license.
7. If tune file security has been applied to the tune file, review and accept the Security Warning.



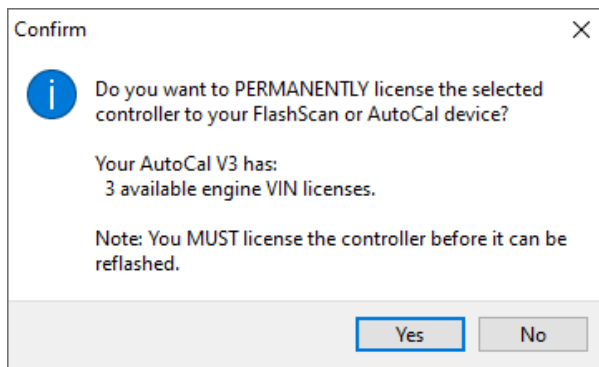
8. Click on the **[F6: Cal Flash]** or **[F7: Full Flash]** options in the left-hand pane.



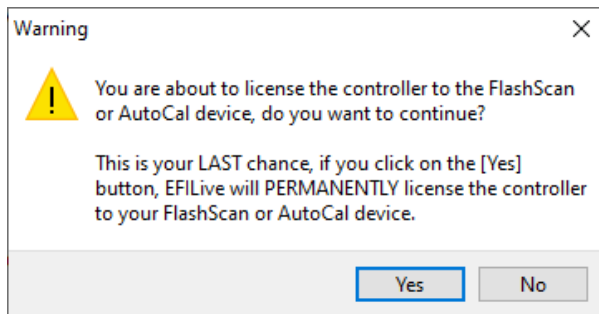
9. Confirm that the selected flash method is supported for the controller selected. This is denoted by a cross or a tick on the controller icon displayed.
10. Click on the **Check License** button. This will indicate if the controller is already licensed or needs to be licensed.



11. Where the controller is NOT licensed, select **Activate License** to license the controller.
12. Select **Yes** to license the controller or **No** to close this window.

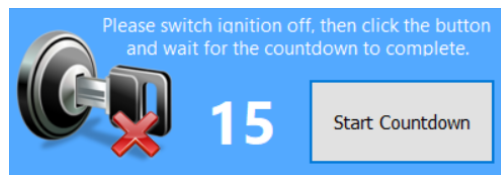


13. Select **Yes** to license the controller or **No** to close this window without licensing the controller.



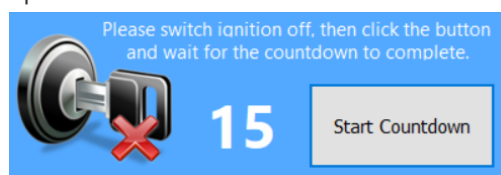
14. When the **Check License** process is complete a countdown timer will be shown for GM controllers. When prompted perform the following actions:

1. Turn the vehicle ignition Off.
2. Click on the Start button to begin the countdown timer.
3. DO NOT turn the vehicle ignition on until the countdown timer expires. This time is critical to allow the ECM to perform internal functions after a read operation.



15. Select the **Cal Flash** or **Full Flash** button to commence the flash.
16. While the ECM is flashing an Elapsed time indicator, an Estimated Time Remaining indicator, and a Progress bar will display tracking the Flash progress.
17. When the flash process is complete a countdown timer will be shown. When prompted perform the following actions:

1. Turn the vehicle ignition Off.
2. Click on the Start button to begin the countdown timer.
3. DO NOT turn the vehicle ignition on until the countdown timer expires. This time is critical to allow the ECM to perform internal functions after a read operation.



Related Content

- [V3 Flash & License a Controller](#)
- [FlashScan V2 Flash & License a Controller](#)
- [AutoCal V2 Flash & License a Controller](#)
- [Problem Flashing a Controller](#)

Comments (0)
