



Knowledgebase > FlashScan V2 > FlashScan V2 Vehicle Communications > Move Files to/from FlashScan V2

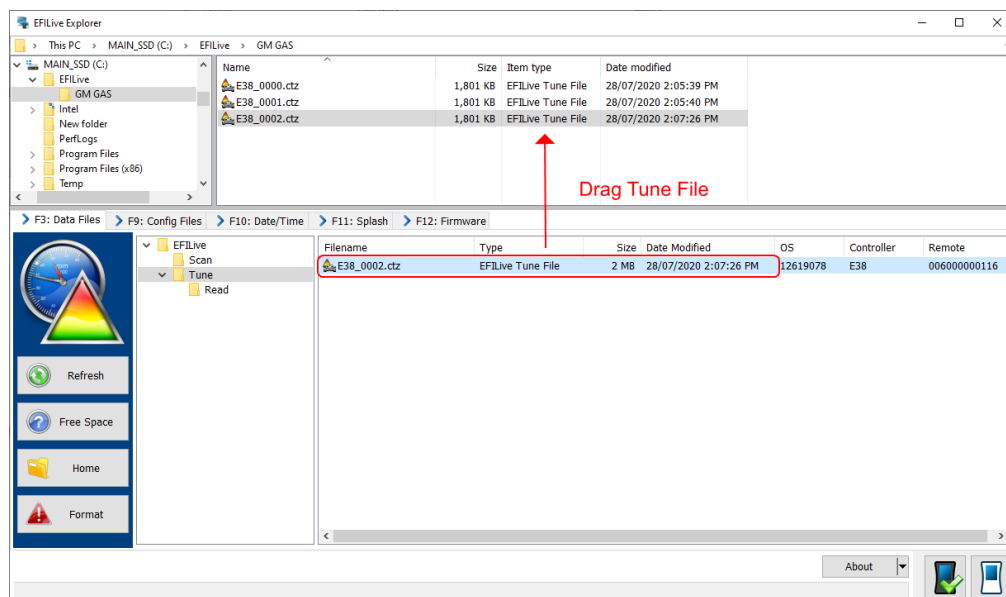
Move Files to/from FlashScan V2

EFILive Support - 2020-07-29 - Comments (0) - FlashScan V2 Vehicle Communications

Move files from FlashScan V2 to PC

To move tune files and log files from FlashScan V2 to your PC;

1. Connect **FlashScan V2** to your PC.
2. Open **EFILive Explorer**.
3. Navigate to the directory on your PC where you wish to save the file.
4. Navigate to: **[F3: Data Files]**.
5. Select appropriate folder on your FlashScan device and drag the selected file to your PC.



Move files from PC to FlashScan V2

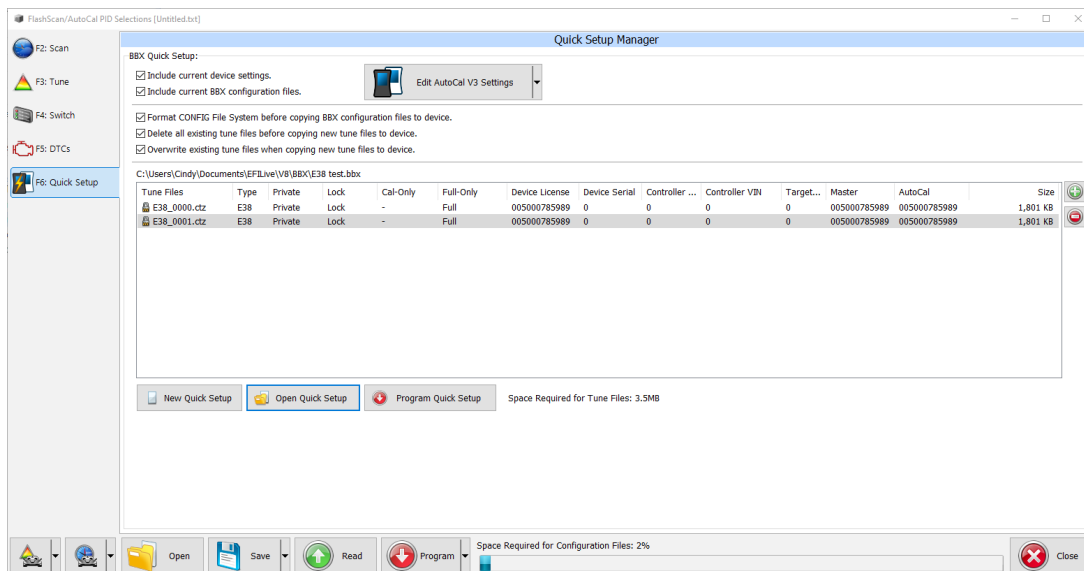
There are two methods to move tune files from your PC onto **FlashScan V2**;

Program Quick Setup *.bbx file via EFILive V8 Scan and Tune

The **[Program Quick Setup]** option programs all selected Scan, Tune, Switch, and DTC options, as well as selected device settings, BBX Quick Setup selections and tune files.

Once the device is programmed, **FlashScan V2** is configured.

Please follow the [Configure FlashScan for BBX](#) guide and use the **[Program Quick Setup]** option.



EFLive Explorer

To place tune files from your PC onto **FlashScan V2**;

1. Connect your **FlashScan V2** device to your PC.
2. Open **EFLive Explorer**.
3. Navigate to the directory on your PC where you have saved your tune files.
4. Navigate to: **[F3: Data Files]**.
5. Select appropriate folder on your **FlashScan V2** device and drag the selected file from your PC to **FlashScan V2**.

