



## Move Files to/from AutoCal V3

EFILive Support - 2020-11-04 - Comments (0) - AutoCal V3 Hardware Configuration

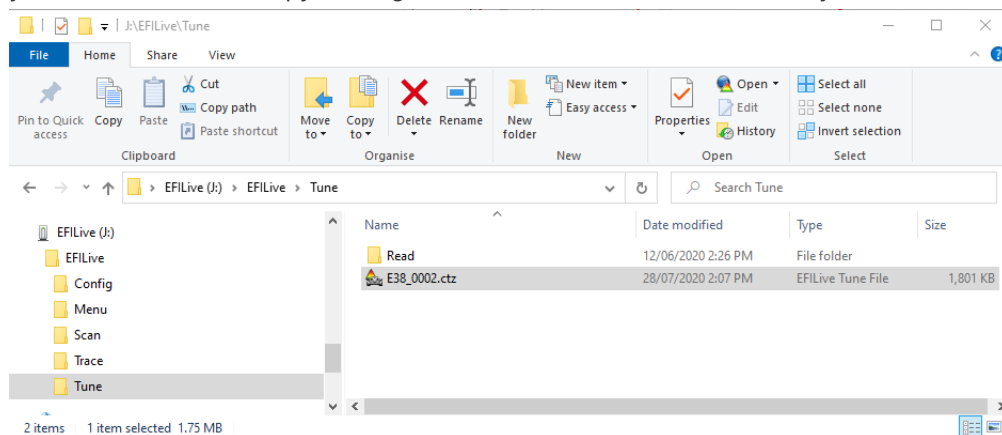
### Move files from AutoCal V3 to PC

There are two methods to move tune files from your **AutoCal V3** to PC; the method you use will depend on the instructions provided by your tuner.

Connect AutoCal V3 as a USB Thumb Drive to Windows Explorer

To move tune files and log files from AutoCal V3 onto your PC;

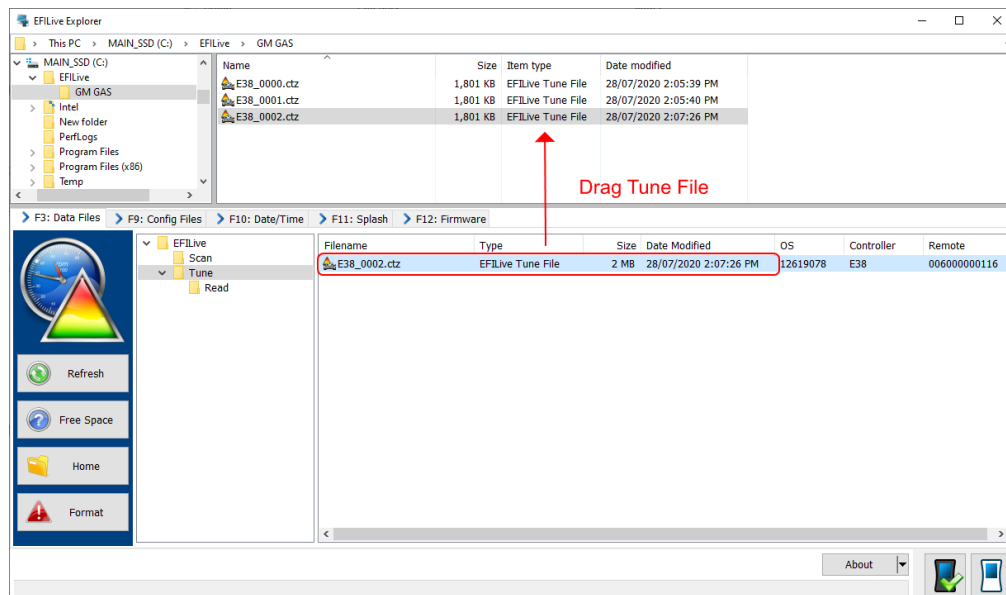
1. Connect **AutoCal V3** to your PC.
2. On **AutoCal V3** navigate to **Options -> File System -> USB Thumb Drive**.
3. Using **Windows Explorer**, locate the files you wish to copy in the correct folder of your AutoCal V3 and copy or drag the files into the desired folder on your PC.



EFILive Explorer

To move tune files and log files from AutoCal V3 to your PC;

1. Connect **AutoCal V3** to your PC.
2. Open **EFILive Explorer**.
3. Navigate to the directory on your PC where you wish to save the file.
4. Navigate to: **[F3: Data Files]**.
5. Select appropriate folder on your AutoCal device and drag the selected file to your PC.



## Move files from PC to AutoCal V3

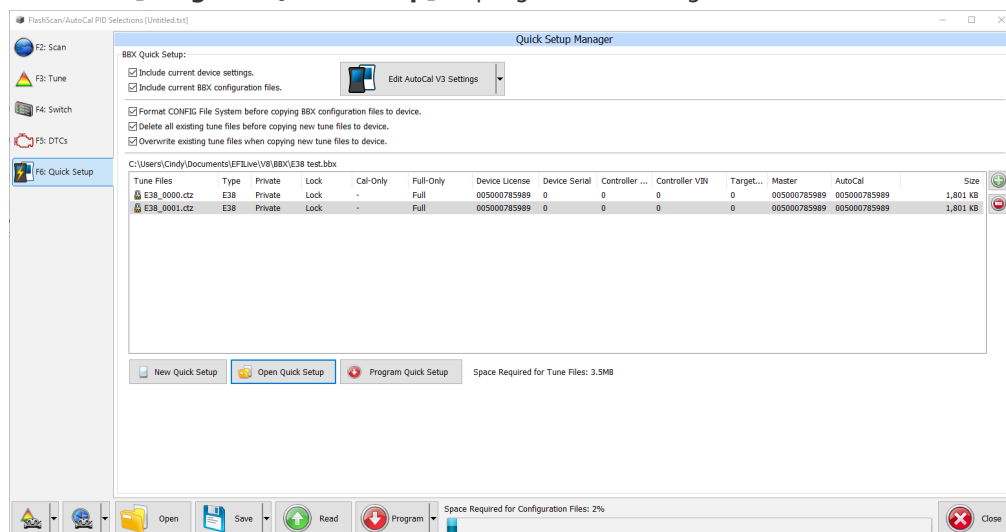
There are three methods to move tune files from your PC onto **AutoCal V3**; the method you use will depend on the instructions provided by your tuner.

Program Quick Setup \*.bbx file via EFILive V8 Scan and Tune

The **[Program Quick Setup]** option programs all selected Scan, Tune, Switch, and DTC options, as well as selected device settings, BBX Quick Setup selections and tune files.

Once the device is programmed, **AutoCal V3** is configured.

1. Connect your **AutoCal V3** to your PC.
2. Open the **EFILive V8 Scan and Tune** application.
3. Select **[F5: BBX]** option in the left-hand pane.
4. Select **[F6: Quick Setup]** option in the left-hand pane.
5. Select the **[Open Quick Setup]** button and navigate to the Quick Setup file your tuner has provided.
6. Select the **[Program Quick Setup]** to program the configuration into **AutoCal V3**.



7. AutoCal V3 users may alter their BBX configuration following the [Configure FlashScan](#)

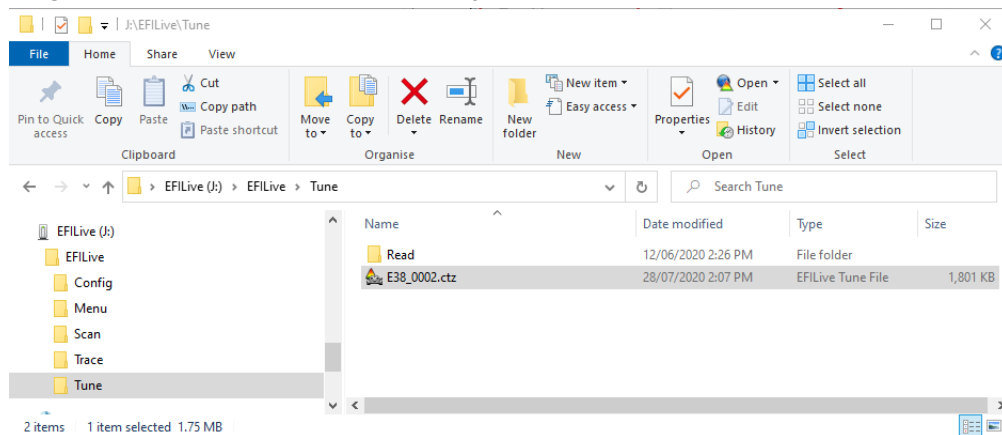
[and AutoCal for BBX](#) guide, however should discuss this with their tuner before editing their BBX Configuration.

8. Executing the **[Program Quick Setup]** saves the Options.txt file as a temporary file in the folder: \Documents\EFILive\V8\tmp. Where the User's PC virus software prevents this access a "Cannot Create file....Access Denied" message will display. Users should modify their virus software permissions to allow this file to be created.

Connect AutoCal V3 as a USB Thumb Drive to Windows Explorer

To place tune files from your PC onto AutoCal;

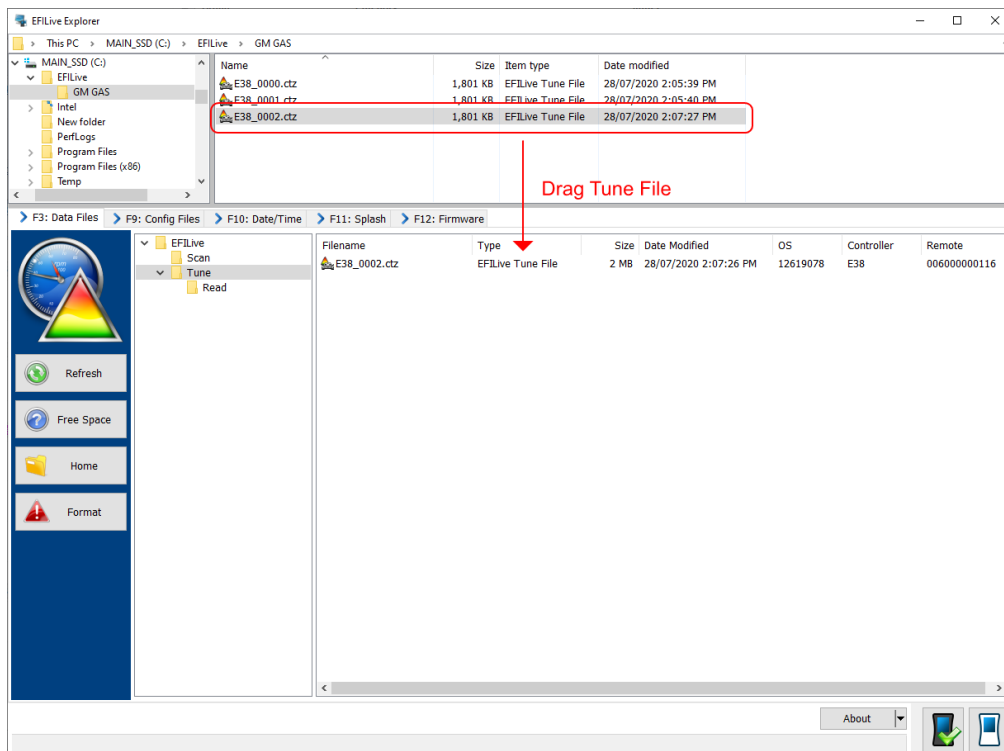
1. Connect **AutoCal V3** to your PC.
2. On **AutoCal V3** navigate to **Options -> File System -> USB Thumb Drive**.
3. Using **Windows Explorer**, locate the files you wish to copy on your PC and copy or drag the files into the correct folder on your **AutoCal V3**.



EFILive Explorer

To place tune files from your PC onto AutoCal;

1. Connect your **AutoCal V3** device to your PC.
2. Open **EFILive Explorer**.
3. Navigate to the directory on your PC where you have saved your file from your tuner.
4. Navigate to: **[F3: Data Files]**.
5. Select appropriate folder on your **AutoCal V3** device and drag the selected file from your PC to AutoCal.



Comments (0)