



Knowledgebase > AutoCal V2 > AutoCal V2 Hardware Configuration > Move Files to/from AutoCal V2

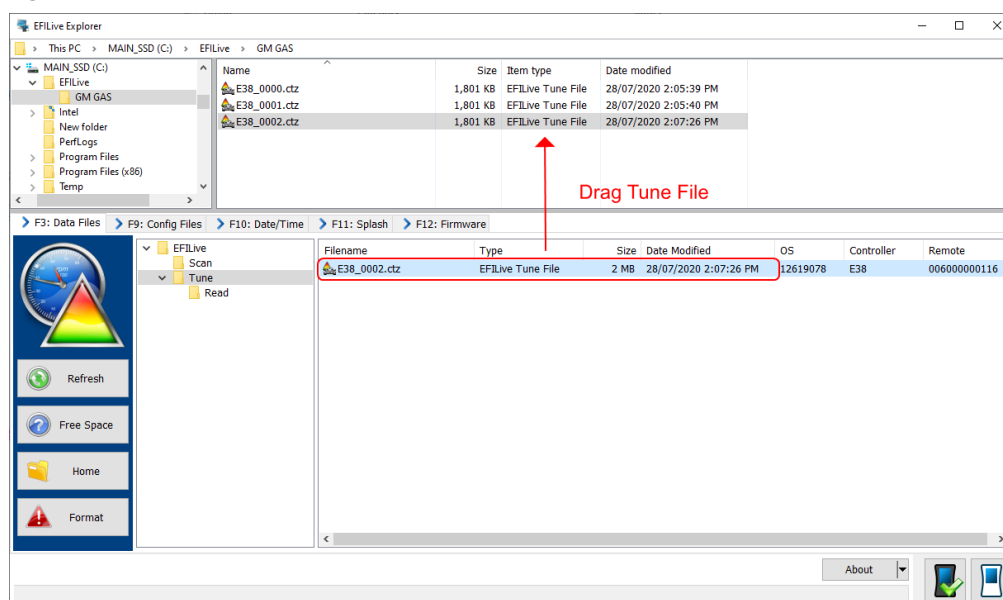
## Move Files to/from AutoCal V2

EFILive Support - 2020-11-05 - Comments (0) - AutoCal V2 Hardware Configuration

# Move files from AutoCal V2 to PC

To move tune files and log files from AutoCal V2 to your PC;

1. Connect **AutoCal V2** to your PC.
2. Open **EFILive Explorer**.
3. Navigate to the directory on your PC where you wish to save the file.
4. Navigate to: **[F3: Data Files]**.
5. Select appropriate folder on your AutoCal device and drag the selected file to your PC.



## Move files from PC to AutoCal V2

There are two methods to move tune files from your PC onto **AutoCal V2**; the method you use will depend on the instructions provided by your tuner.

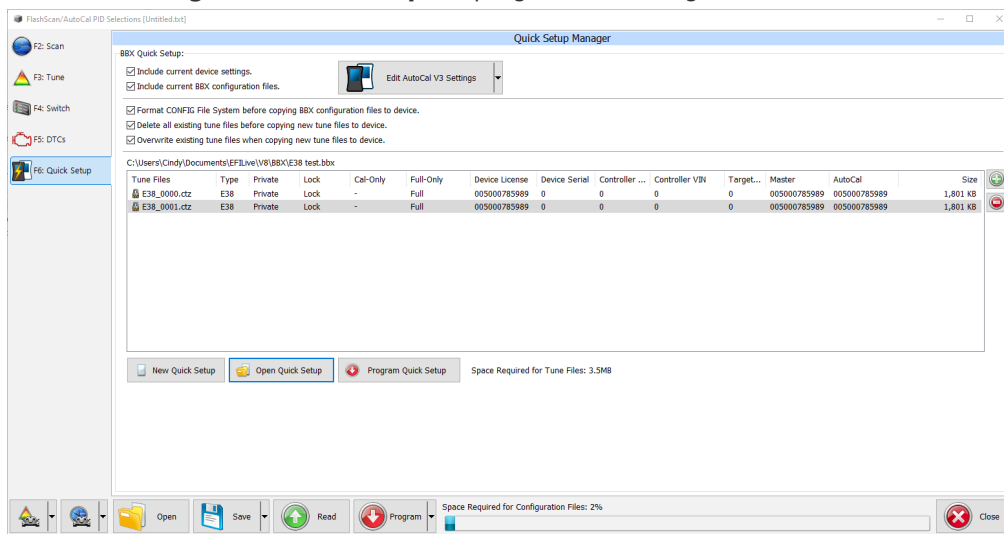
Program Quick Setup \*.bbx file via EFILive V8 Scan and Tune

The **[Program Quick Setup]** option programs all selected Scan, Tune, Switch, and DTC options, as well as selected device settings, BBX Quick Setup selections and tune files.

Once the device is programmed, **AutoCal V2** is configured.

1. Connect **AutoCal V2** to your PC.
2. Open the **EFILive V8 Scan and Tune** application.
3. Select **[F5: BBX]** option in the left-hand pane.

4. Select **[F6: Quick Setup]** option in the left-hand pane.
5. Select the **[Open Quick Setup]** button and navigate to the Quick Setup file your tuner has provided.
6. Select the **[Program Quick Setup]** to program the configuration into **AutoCal V2**.



7. AutoCal V2 users may alter their BBX configuration following the [Configure FlashScan and AutoCal for BBX](#) guide, however should discuss this with their tuner before editing their BBX Configuration.
8. Executing the **[Program Quick Setup]** saves the Options.txt file as a temporary file in the folder: \Documents\EFILive\V8\tmp. Where the User's PC virus software prevents this access a "Cannot Create file....Access Denied" message will display. Users should modify their virus software permissions to allow this file to be created.

## EFILive Explorer

To place tune files from your PC onto AutoCal;

1. Connect your **AutoCal V2** device to your PC.
2. Open **EFILive Explorer**.
3. Navigate to the directory on your PC where you have saved your file from your tuner.
4. Navigate to: **[F3: Data Files]**.
5. Select appropriate folder on your **AutoCal V2** device and drag the selected file from your PC to AutoCal V2.

