

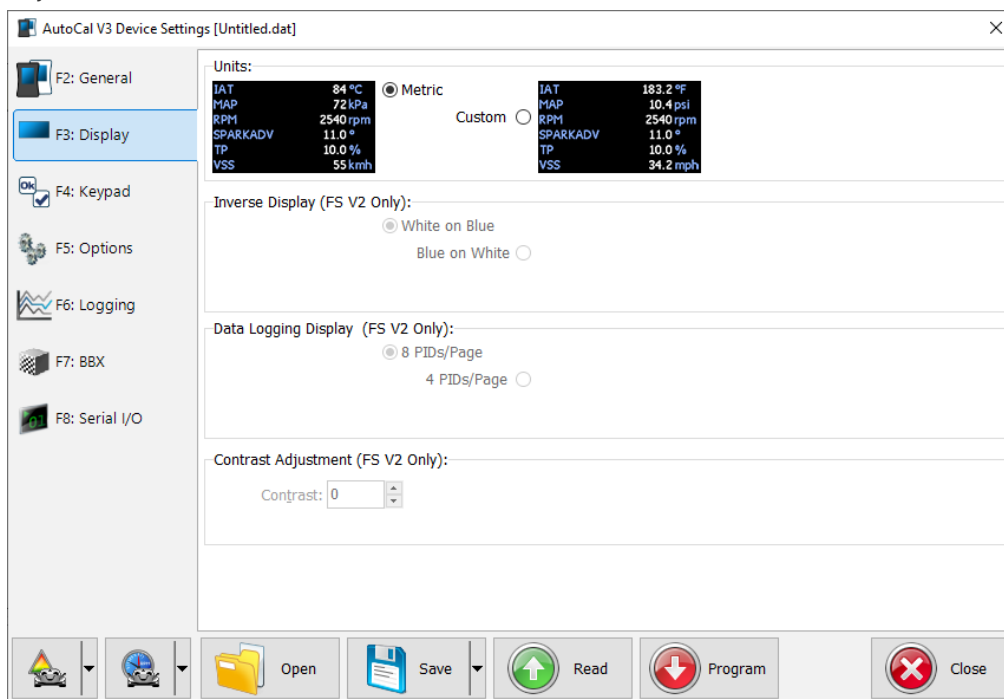


FlashScan V2 Screen Contrast

EFILive Support - 2020-07-24 - Comments (0) - FlashScan V2 Hardware Configuration

FlashScan V2 with Blue Case

1. Open **EFILive V8 Scan and Tune** software
2. Connect your **FlashScan V2** to your PC.
3. Navigate to **[F6: Devices] -> [F3 Display]**.
4. Adjust the Contrast.



5. Program **FlashScan V2** using the **[Program]** option.

Contrast levels on our before photo are 0 units, and contrast levels on our after photo are 60 units.



FlashScan V2 with Black Case

1. Open **EFILive V8 Scan and Tune** software
2. Connect your **FlashScan V2** to your PC.
3. Navigate to **[F6: Devices] -> [F3 Display]**.
4. Adjust Visibility.
5. Program **FlashScan V2** using the **[Program]** option.

Related Content

- [Device Settings](#)
- [FlashScan V2 Device Settings](#)