



FlashScan License Status

EFILive Support - 2022-03-20 - Comments (0) - FlashScan V2 Licensing

Tuning Licenses

Follow these steps to determine the tuning license status on your **FlashScan**.

1. Connect your **FlashScan** device to your PC.
2. Open the **EFILive V8 Scan and Tune** application.
3. Select the **[F7: License]** option in the left-hand pane.
4. Select **[F2: Hardware]** to display Tuning License details.

What does this display mean?

1. Device Summary Tabs:
 1. **Firmware** - displays Product type, Boot Block and Firmware Versions
 2. **VIN Licenses** - Installed, Used and Available license summary.
 3. **Flash Counters** - total number of Cal Flashes and Full Flashes performed.
2. Tuning License Summary:
 1. **Scanning and Logging** - activated on all FlashScan and AutoCal devices.
 2. **GM Tuning** - enables Flashing for GM supported vehicles.
 3. **Cummins Tuning** - enables Flashing for Dodge Cummins supported vehicles.
 4. **Cummins HD** - enables Flashing for Cummins HD supported vehicles (this option is only available of **FlashScan/AutoCal V3** and **FlashScan/AutoCal HD** products).

5. **Pro Tuning** - not yet available.

To purchase additional Tuning Licenses for **FlashScan V3** or **FlashScan V2**;

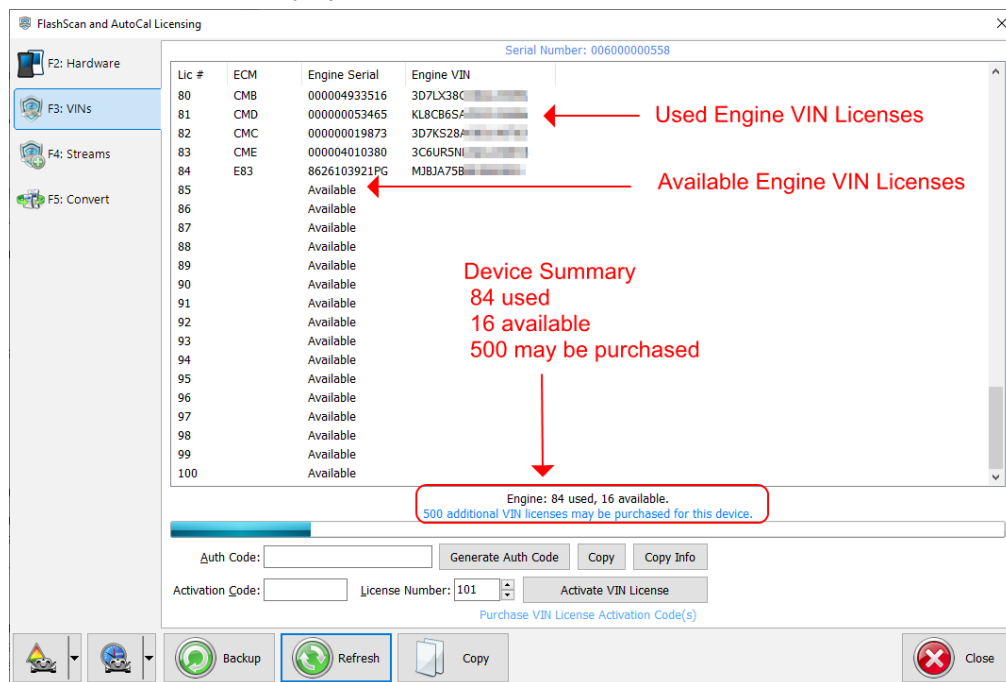
1. Click on the **Purchase Tuning License Activation Code(s)** link to order products.
2. Copy your Serial Number from the **Serial Number** display.
3. Enter emailed Activation Code and select **Activate**.

VIN Licenses

TCM Licenses are free for customers running V8.3.1 software (or later) and licensed TCMs are no longer displayed.

Follow these steps to determine the VIN license status on your **FlashScan** .

1. Connect your **FlashScan** device to your PC.
2. Open the **EFILive V8 Scan and Tune** application.
3. Select the **[F7: License]** option in the left-hand pane.
4. Select **[F3: VINs]** to display VIN License details.



5. For VIN License purchases, click the **[Generate Auth Code]** button. The Authentication Code will be shown in the **Auth Code** field.

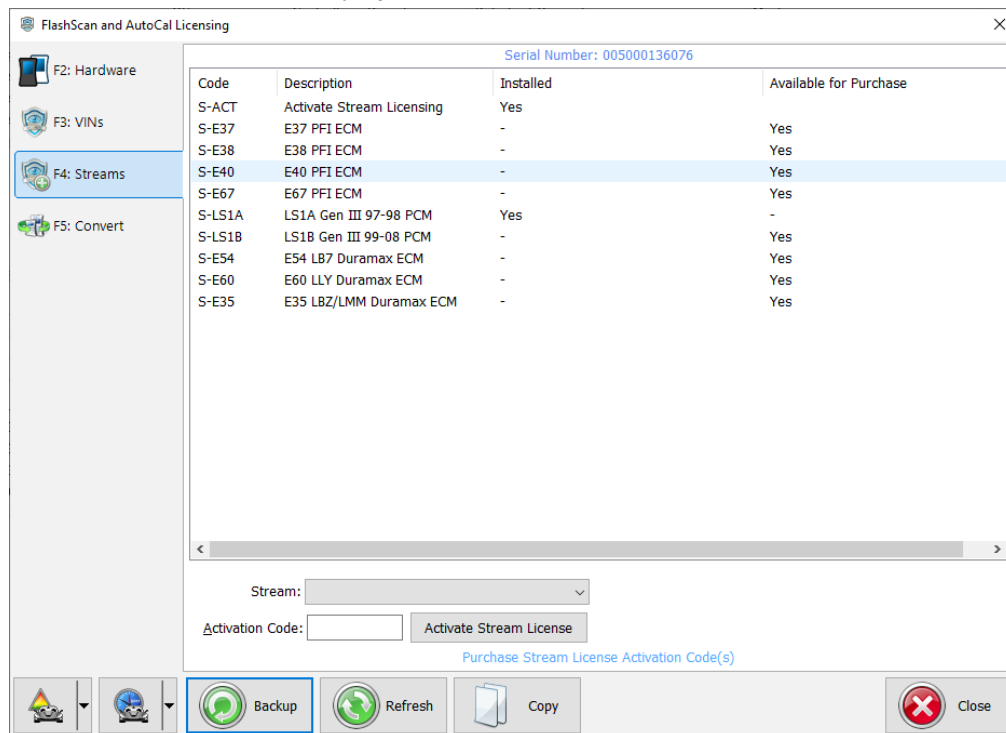
Stream Licenses

Stream Licenses are no longer available for purchase on **FlashScan V2**. Where a customer purchases **FlashScan V3**, a previously purchased V2 Stream License Transfer service is available.

Follow these steps to determine the Stream license status on your FlashScan.

1. Connect your **FlashScan** device to your PC.
2. Open the **EFILive V8 Scan and Tune** application.
3. Select the **[F7: License]** option in the left-hand pane.

4. Select **[F3: Streams]** to display Stream License details.



Related Content

- [AutoCal V3 VIN Licenses & Slots](#)
- [AutoCal V2 VIN Licenses & Slots](#)
- [License Purchases & Activation Codes](#)