

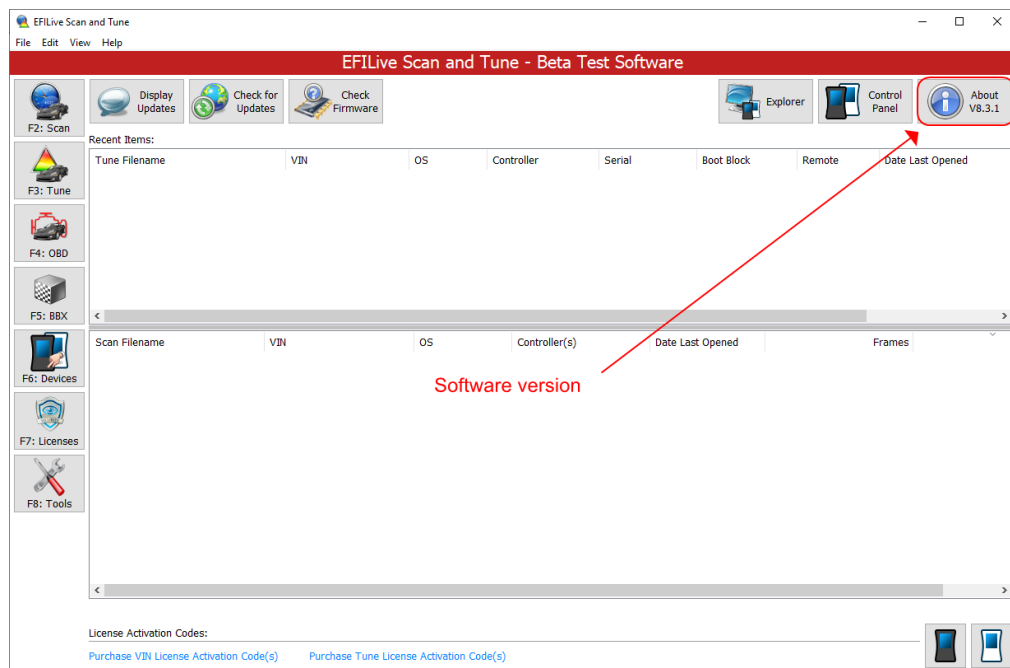


Find V8 Software Version

EFILive Support - 2020-07-03 - Comments (0) - V8 Scan and Tune Software

Follow these steps to obtain the EFILive V8 Scan and Tune software version and build information.

1. Open the **EFILive V8 Scan and Tune** application.
2. The **Version** number is shown on the main screen on the **About** button.



Related Content

- [Getting Started](#)
- [Finding V7 Software Version](#)
- [Update V8 Software](#)