



## SD Card Configuration

EFILive Support - 2020-07-10 - Comments (0) - V8 Scan and Tune Software

# Supported SD Card Formats

**FlashScan V2** supports the following SD card formats:

- SD (also called SDSC) V1.0
- SD (also called SDSC) V1.01
- SDHC V2.0

**FlashScan V2** does not support the following:

- SDXC SD cards
- UHS features
- SDIO features

**FlashScan V2** supports SD cards up to 32GB. SD Cards with a capacity of less than 64MB not supported.

## Configure FlashScan V2 to use an SD Card

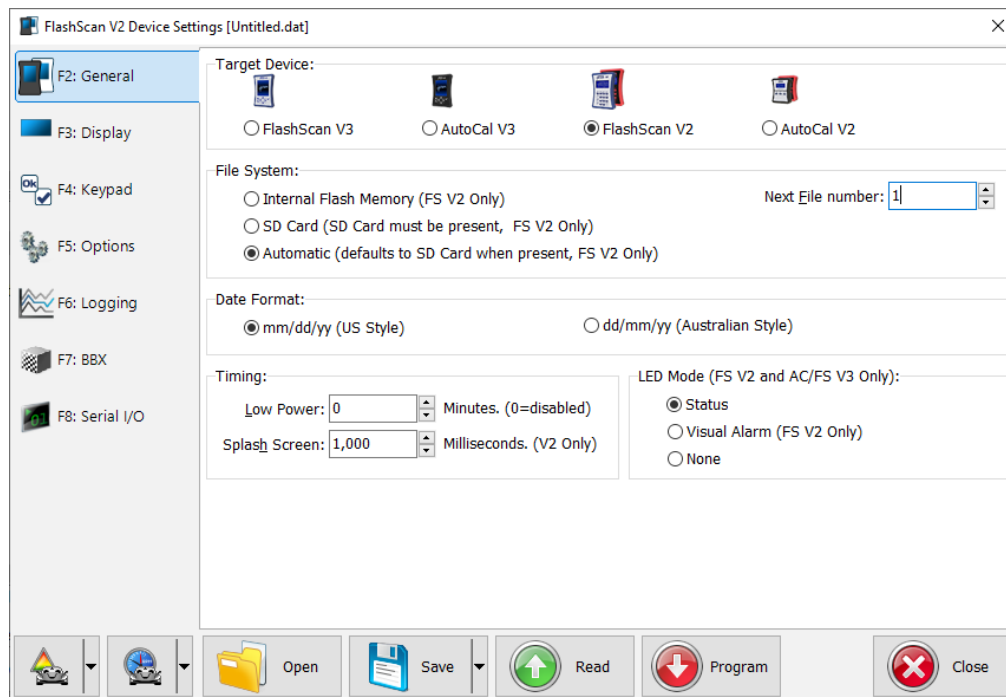
There are 2 different methods to access Device Settings. To access these;

1. Connect your **FlashScan V2** to your PC.
2. Open the **EFILive V8 Scan and Tune** application, and then select either:
  1. Select the **[F6: Devices]** option in the left-hand pane; or
  2. Select the **[F5: BBX] -> [F6: Quick Setup]** menu and select the **Edit FlashScan V2 Settings** option.

Both menu options perform the same function, however the option via the **[F5: BBX] -> [F6: Quick Setup]** allows these settings to be programmed in a single process along with all other BBX settings. The option via **[F6: Devices]** requires separate programming to other BBX settings.

Navigate to the **Device Settings** option using either of the above methods;

1. Select **[F2: General]** and select appropriate file system options.



2. Navigate to **[F5: Options]** and select appropriate options to check SD card space and enable data protection for SD card.
3. Select other User Configuration options as appropriate. Refer to article for further details.
4. Program **FlashScan V2** using the **Program** option, or
5. Select **Close** to return to the **Quick Setup**, select **Include current device settings**, and **Program Quick Setup**.

## Format SD Card

There are 2 methods available to format an SD card for use with **FlashScan V2**.

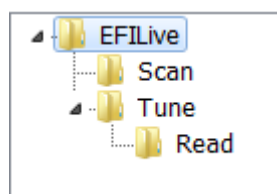
Format via FlashScan V2

1. Connect **FlashScan V2** to either your vehicle or PC.
2. Navigate to **F4 Options->F2 File System->F3 Format File Sys.**
3. Select **Yes** to Format the file system.

NOTE: Formatting the File System DOES NOT delete configuration data, but will delete tune and log files.

Format via PC with SD Card slot

1. Right click on the SD Card in Windows Explorer and select Format.
2. Manually add the folder structures to match what **FlashScan V2** expects.



## Related Content

- [Configure FlashScan and AutoCal for BBX](#)
- [Device Settings](#)