

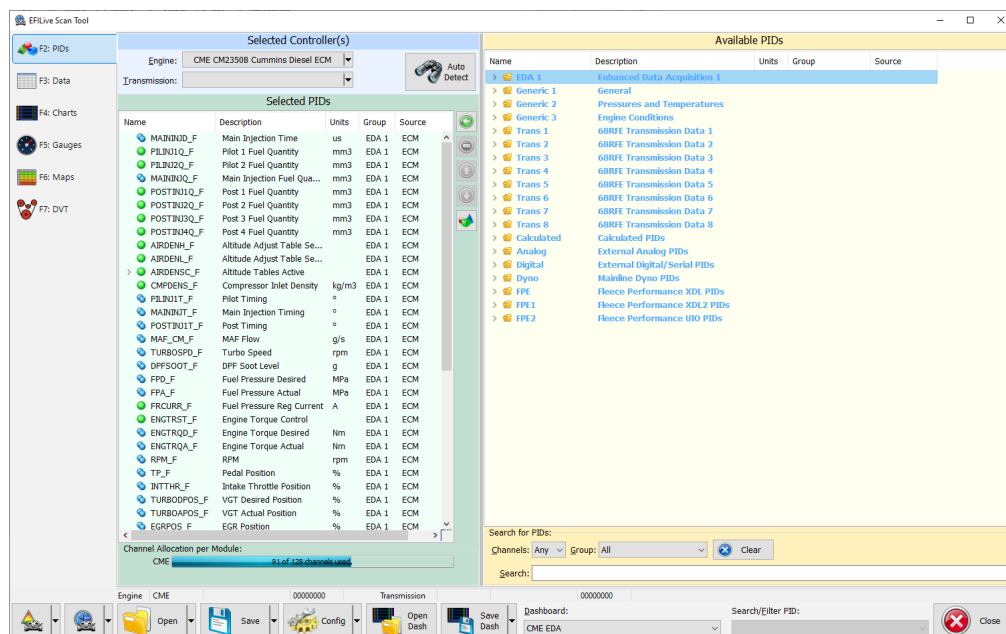


Pass-Thru Data Logging

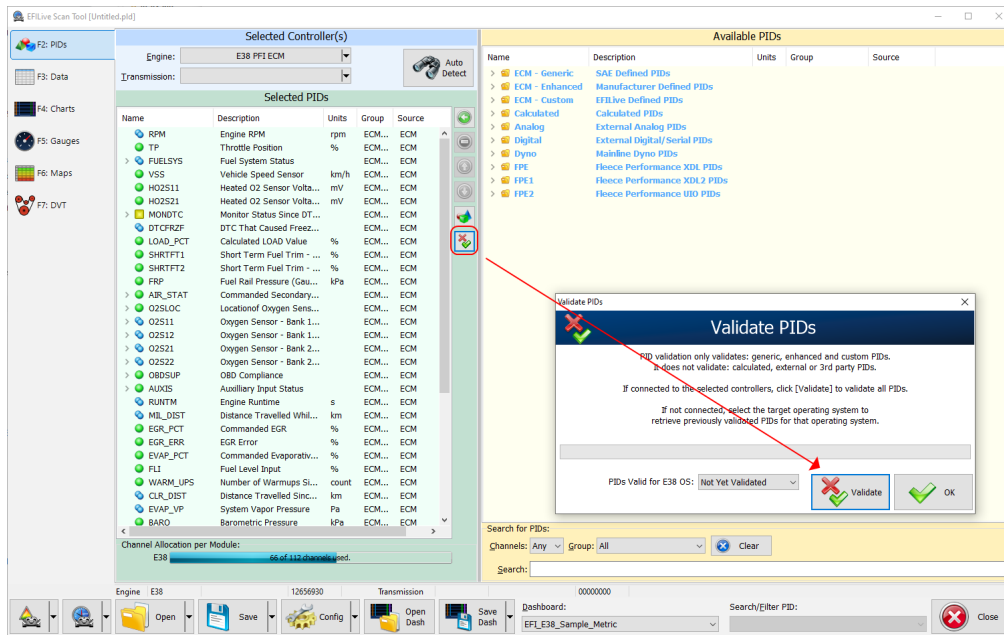
EFILive Support - 2021-07-14 - Comments (0) - V8 Scan and Tune Software

Follow these steps to log the selected controller using EFILive V8 Scan and Tune software.

1. Open the **EFILive V8 Scan and Tune** application.
2. Connect your **FlashScan/AutoCal** device to your PC and vehicle.
3. Select an existing Dashboard configuration either by using the **[Open Dash]** button or using the **Dashboard** drop down, or configure after making controller and PID selections.
4. Navigate to the **[F2: Scan] -> [F2: PIDs]** menu option.
5. In the **Engine** and/or **Transmission** field use the drop down list to select the correct controller type or use **Auto Detect**.
6. Drag PID selections from the **Available PIDs** window into the **Selected PIDs** window.



7. For GM and Cummins HD, PIDs should be validated using the Validate option to ensure only valid PIDs are logged.



8. Navigate to the **[F3: Data]**, **[F4: Charts]**, **[F5: Gauges]** or **[F6: Maps]** tab and configure your dashboard to arrange data displays where a dashboard has not already been selected.
9. Start the vehicle.
10. Select either Record or Monitor from the **[F3: Data]**, **[F4: Charts]**, **[F5: Gauges]** or **[F6: Maps]** screens.
11. Select **Stop** to stop the data logging session.
12. Save the log.
13. To replay the data log, navigate to the **[F3: Data]**, **[F4: Charts]**, **[F5: Gauges]** or **[F6: Maps]** tab and select the appropriate Playback buttons.



Related Content

- [FlashScan V2 Data Logging](#)
- [V3 Data Logging](#)
- [AutoCal V2 Data Logging](#)