



Knowledgebase > FlashScan V3 > FlashScan V3 Hardware Configuration > Move Files to/from FlashScan V3

Move Files to/from FlashScan V3

EFILive Support - 2020-07-29 - Comments (0) - FlashScan V3 Hardware Configuration

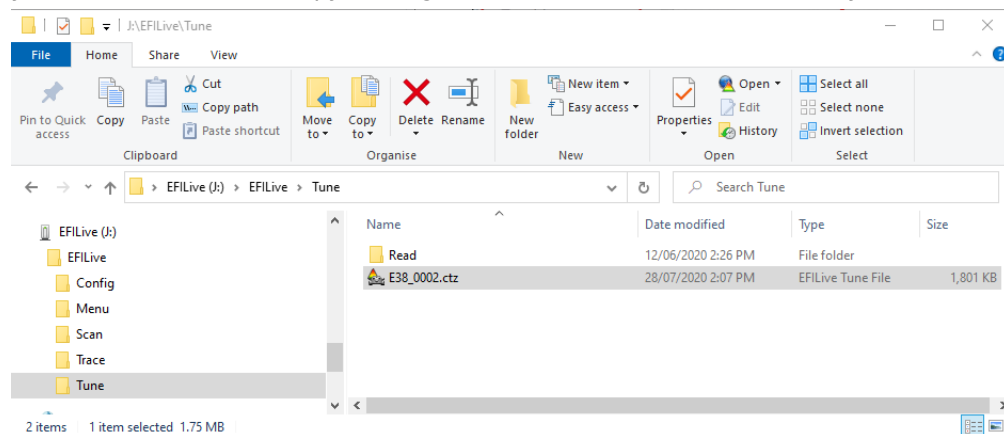
Move files from FlashScan V3 to PC

There are two methods to move tune files from your **FlashScan V3** to PC;

Connect FlashScan V3 as a USB Thumb Drive to Windows Explorer

To move tune files and log files from FlashScan V3 onto your PC;

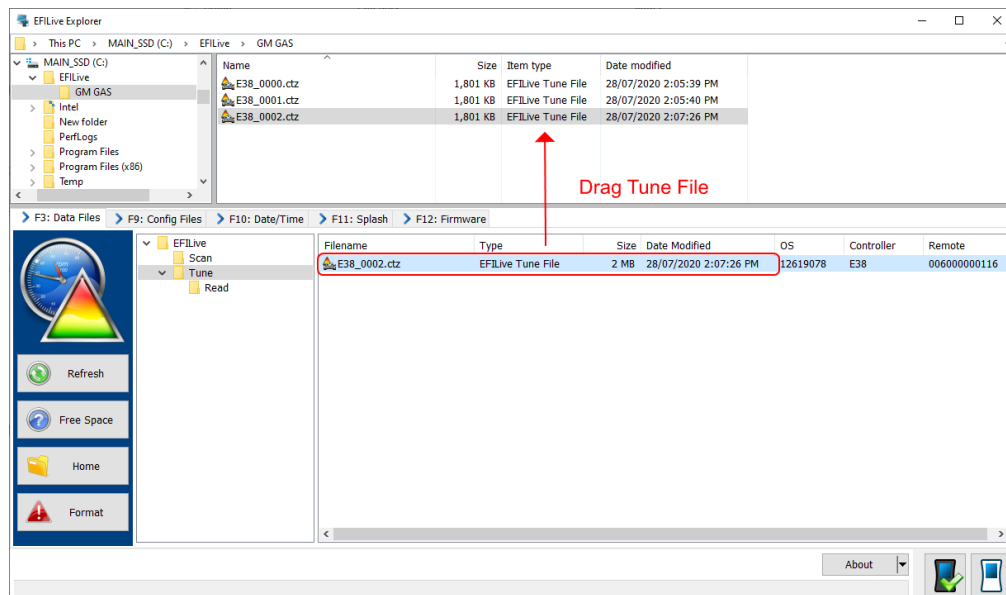
1. Connect **FlashScan V3** to your PC.
2. On **FlashScan V3** navigate to **Options -> File System -> USB Thumb Drive**.
3. Using **Windows Explorer**, locate the files you wish to copy in the correct folder of your FlashScan V3 and copy or drag the files into the desired folder on your PC.



EFILive Explorer

To move tune files and log files from FlashScan V3 to your PC;

1. Connect **FlashScan V3** to your PC.
2. Open **EFILive Explorer**.
3. Navigate to the directory on your PC where you wish to save the file.
4. Navigate to: **[F3: Data Files]**.
5. Select appropriate folder on your FlashScan device and drag the selected file to your PC.



Move files from PC to FlashScan V3

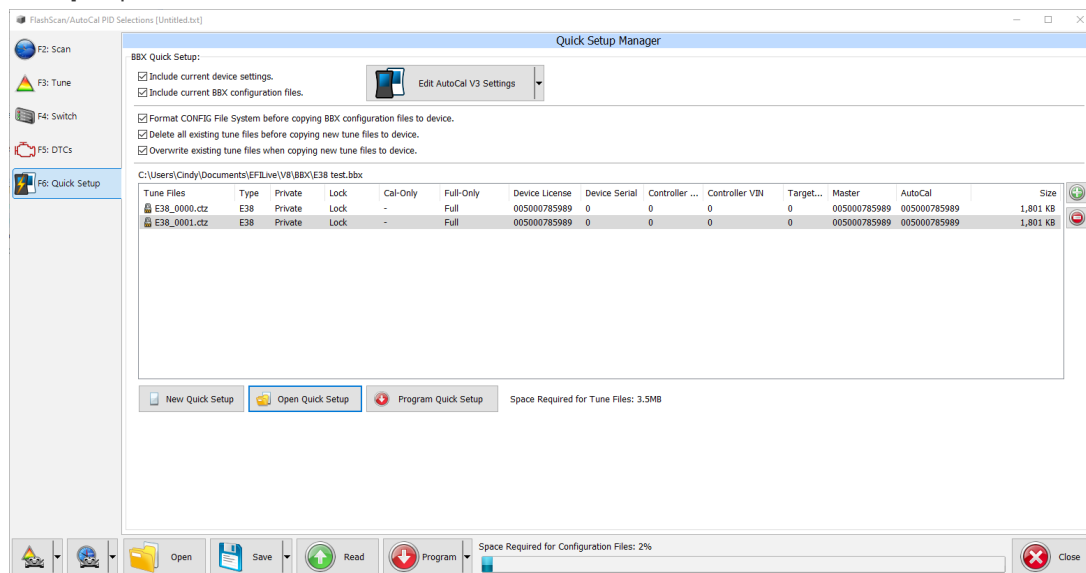
There are three methods to move tune files from your PC onto **FlashScan V3**;

Program Quick Setup *.bbx file via EFLive V8 Scan and Tune

The **[Program Quick Setup]** option programs all selected Scan, Tune, Switch, and DTC options, as well as selected device settings, BBX Quick Setup selections and tune files.

Once the device is programmed, **FlashScan V3** is configured.

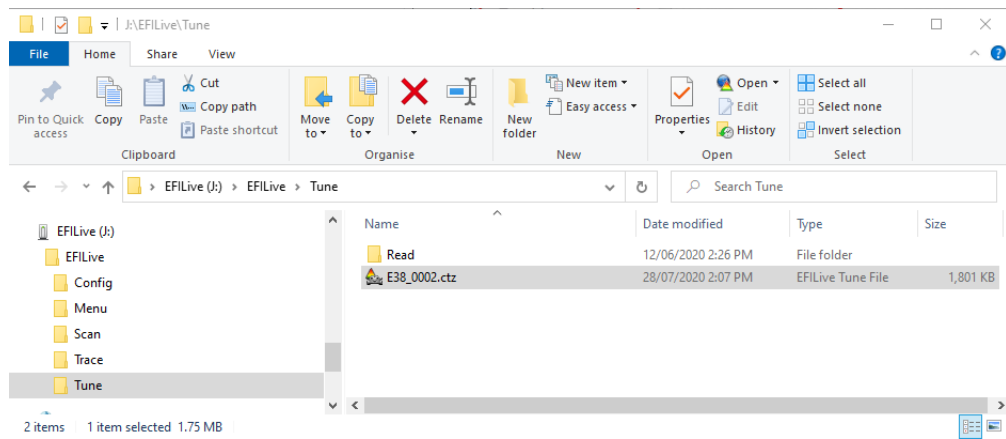
Please follow the [Configure FlashScan for BBX](#) guide and use the **[Program Quick Setup]** option.



Connect FlashScan V3 as a USB Thumb Drive to Windows Explorer

To place tune files from your PC onto FlashScan;

1. Connect **FlashScan V3** to your PC.
2. On **FlashScan V3** navigate to **Options -> File System -> USB Thumb Drive**.
3. Using **Windows Explorer**, locate the files you wish to copy on your PC and copy or drag the files into the correct folder on your **FlashScan V3**.



EFILive Explorer

To place tune files from your PC onto **FlashScan V3**;

1. Connect your **FlashScan V3** device to your PC.
2. Open **EFILive Explorer**.
3. Navigate to the directory on your PC where you have saved your tune files.
4. Navigate to: **[F3: Data Files]**.
5. Select appropriate folder on your **FlashScan V3** device and drag the selected file from your PC to **FlashScan V3**.

